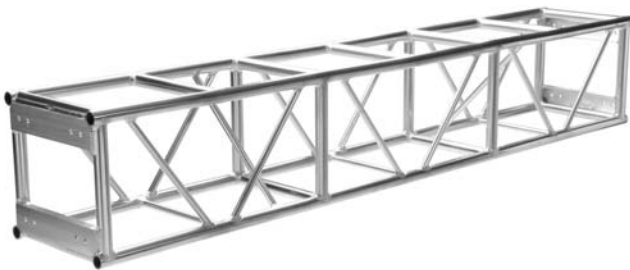




FEATURES

- Highly Polished Aluminum Tubing
- 1.9" OD 6061-T6 Aluminum Tube Schd #40
- 0.145" Wall Thickness
- 1.05" OD Aluminum Bracing
- Fabricated By Certified Welders
- Custom Lengths & Corners Available
- Available With Steel Spigots
- Powder Coating Available

Applied Electronics 20.5" x 20.5" truss is manufactured with schedule 40, 1.9" OD x 0.145" wall main chords and 1.05" OD x 0.125" wall diagonal bracing. All components are 6061-T6 aluminum tubing, and 5/8" grade 8 bolts are supplied for assembly of the truss elements. Applied 20.5" x 20.5" is suitable for the majority of lighting applications, flying P.A. and it can be used with GS Towers. This truss can also be supplied with casters.



PLATED ALLOWABLE LOAD DATA

Maximum Allowable Uniform Loads



Maximum Allowable Center Point Loads



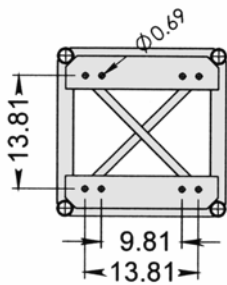
SPAN (ft.)	LOAD (#/ft.)	LOAD (#)	MAX. DEFL. (in.)	LOAD (#)	MAX. DEFL. (in.)
10	800	8000	0.13	7000	0.20
20	350	7000	0.63	4310	0.75
30	112	3360	1.68	2045	1.37
40	50	2000	2.60	1150	2.16

Connection: 5/8" Dia. x 2" Grade 8 Bolts

Weight Load Certified By Structural Engineer

ORDERING INFORMATION

Item No.	Dimensions	Weight
9-02-120	20.5" x 20.5" x 10'	84 lbs.
9-02-096	20.5" x 20.5" x 8'	80 lbs.
9-02-060	20.5" x 20.5" x 5'	70 lbs.
9-02-030	20.5" x 20.5" x 2.5'	60 lbs.
9-02-002	2-Way Corner	55 lbs.
9-02-004	4-Way Corner	55 lbs.
9-02-005	5-Way Corner	60 lbs.

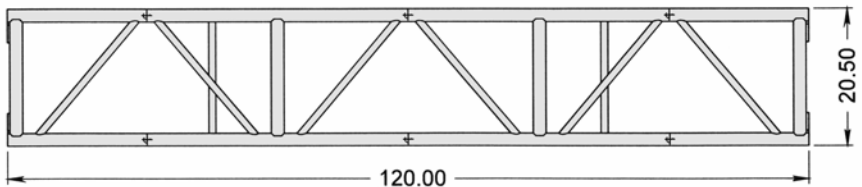


Front View

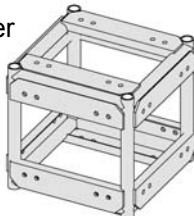
Top View



Side View



Standard Corner



Custom Corner

