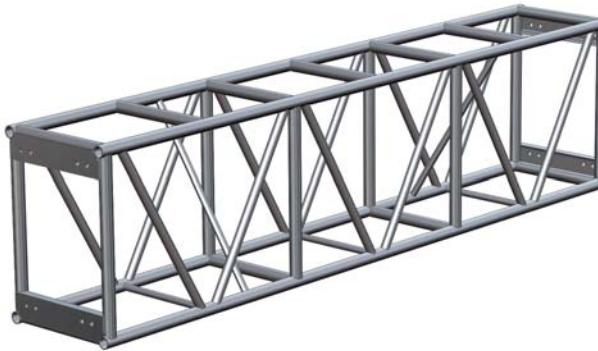




### FEATURES

- Highly Polished Aluminum Tubing
- 1.9" OD 6061-T6 Aluminum Tube Schd #80
- 0.200" Wall Thickness
- 1.375" OD Aluminum Bracing
- Fabricated By Certified Welders
- Custom Lengths & Corners Available
- Available With Steel Spigots
- Powder Coating Available

This heavy duty truss is for those projects with ever increasing load and distance requirements. The truss is plated and connected with grade 8 bolts as standard and can be combined with GS Towers and suitable sleeve blocks to create a roof system perimeter or LED screen support structure. This truss can be supplied with casters. The main chords are 1-1/2" schedule 80, 1.9" OD 6061-T6 aluminum and the diagonals are 1-3/8" OD tube with 0.125" wall.



#### PLATED ALLOWABLE LOAD DATA

#### Maximum Allowable Uniform Loads



#### Maximum Allowable Center Point Loads



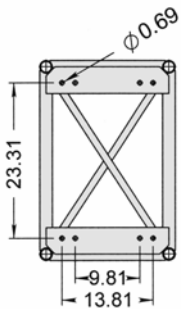
SPAN (ft.)	Maximum Allowable Uniform Loads		Maximum Allowable Center Point Loads		
	LOAD (#/ft.)	LOAD (#)	MAX. DEFL. (in.)	LOAD (#)	MAX. DEFL. (in.)
10	102	10200		5400	
20	360	7200		5200	
30	220	6600		4467	
40	153	6120		4000	
50	120	6000		3800	

Connection: 5/8" Dia. x 2" Grade 8 Bolts

Weight Load Certified By Structural Engineer

### ORDERING INFORMATION

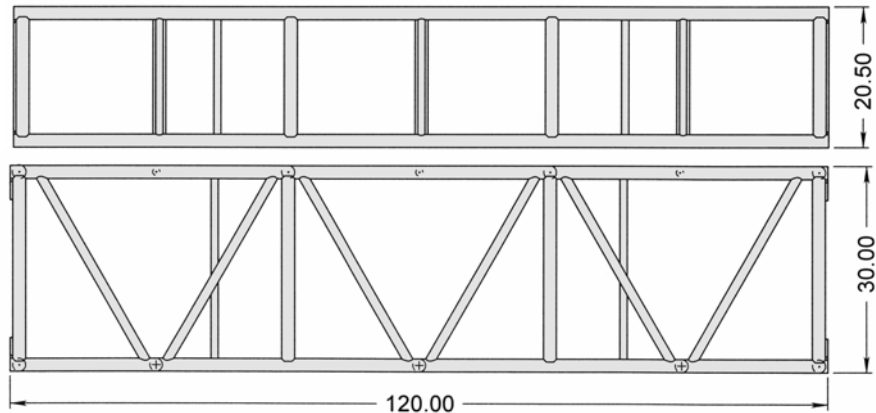
Item No.	Dimensions	Weight
9-03-120	20.5" x 30" x 10'	90 lbs.
9-03-096	20.5" x 30" x 8'	80 lbs.
9-03-060	20.5" x 30" x 5'	70 lbs.
9-03-030	20.5" x 30" x 2.5'	60 lbs.
9-03-002	2-Way Corner	55 lbs.
9-03-004	4-Way Corner	60 lbs.



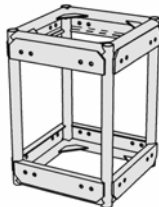
Front View

Top View

Side View



Standard Corner



Custom Corner

