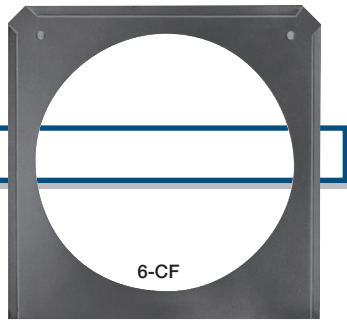


COLOR FRAMES

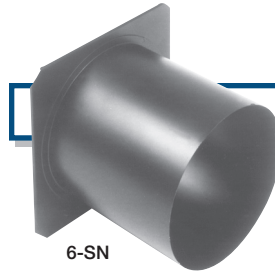
A metal or plastic frame used to add support to color media on a luminaire. Available for most Altman and other lighting fixtures.



Catalog No.	Description & Applicable Fixture
MCF	3 3/8" x 3 3/8": MF, ME, MP, MAC
100-CF	3 3/4" x 3 3/4": 100
3.5Q-CF	4 1/8" x 4 1/8": 3.5Q
4.5-CF	6 1/4" x 6 1/4": 4.5, S6-20 thru -50, PAR46, R3C
6-CF	7 1/2" x 7 1/2": 65Q, 165Q, 1KAF, 360Q, S6-12 S6-1535Z, S6-3055Z, PAR38, PAR56
8-CF	10" x 10": 75Q, 175Q, PAR64, Outdoor-Par Series
TEN-CF	12" x 12": S6-10
TWE-CF	14" x 14": S6-5
153-CF	10 1/2" x 10 1/2": 153
154/160-CF	15 3/4" x 16": 154, 160
155-CF	19" Diameter, 2 Piece Black: 155
161-CF	16" Diameter, 2 Piece Black: 161
R40-CF	5 3/4" x 6 3/4": R40
R40-COMBO	5 3/4" x 6 3/4", 2 Piece: R40
56B-CF	7 3/4" x 8": PAR56-B
56B-COMBO	7 3/4" x 8", 2 Piece: PAR56-B
64B-CF	8 3/4" x 9 1/2": PAR64-B
64B-COMBO	8 3/4" x 9 1/2", 2 Piece: PAR64-B
ZS-CF	4 3/4" x 4 3/8": Zip Strip (one frame per 2 lamps)
JS-CF	4 11/16" x 3 5/16": Jazz Strip (one frame per 2 lamps)
MICS-CF	2 5/8" x 20": Micro Strip (one frame per 10 lamps)
GC-CF	8 3/4" x 13", 2 Piece Black: Ground Cyc
FC-CF	11 1/2" x 10 1/4" Black: Focusing Cyc, EconoCyc
SC-CF	15 1/2" x 15 7/8", 2 Piece Black: SKY-CYC Series
SL-JR-CF	8 3/4" x 8 3/4", 2 Piece Black: SOFT-LITE-JR
SL-CF	8 3/4" x 19", 2 Piece Black: SOFT-LITE
QL-CF	4 1/4" x 6 x 3 1/2" deep, 3 Piece Black: Q-LITE-JR, Q-LITE
F3-FF	5" Diameter, Hinged Black: 300L
F4-FF	6 5/8" Diameter, Hinged Black: 650L
F5-FF	7 3/4" Diameter, Hinged Black: 1000L, 575SE
F7-FF	9" Diameter, Hinged Black: 1000S, 2000L, 1200SE
F10-FF	13" Diameter, Hinged Black: 2000S, 5000L, 2500SE, UV-703
F12-FF	15 1/2" Diameter, Hinged Black: 5000S, 4000SE

Specifications subject to change without notice

SNOOTS



Snoots, or top hats, are devices to reduce light spill. This accessory is available for most Altman lighting fixtures.

Catalog No.	Description & Applicable Fixture
100-SN	3 3/4" x 3 3/4": 100
3.5Q-SN	4 1/8" x 4 1/8": 3.5Q
4.5-SN	6 1/4" x 6 1/4": 4.5Q, PAR46, S6-20 thru -50
6-SN	7 1/2" x 7 1/2": 65Q, 165Q, 1KAF, 360Q, PAR38, PAR56, S6-12, S6-1535Z, S6-3055Z
8-SN	10" x 10": 75Q, 175Q, PAR64
TEN-SN	12" x 12": S6-10
OD-P64-SN	6 3/4" Combination Snoot/Color Frame Holder, Black (8-CF included): Outdoor-Par Series
ODC-SN-SHORT	1 1/2" Short Nose Combination Snoot/Color Frame Holder, Black: Outdoor-Par Series
F3-SN	2 in 1 Set: 300L
F4-SN	2 in 1 Set: 650L
F5-SN	2 in 1 Set: 1000L, 575SE
F7-SN	3 in 1 Set: 1000S, 2000L, 1200SE
F10-SN	3 in 1 Set: 2000S, 5000L, 2500SE, UV-703
F12-SN	3 in 1 Set: 5000S, 4000SE

PATTERN HOLDERS

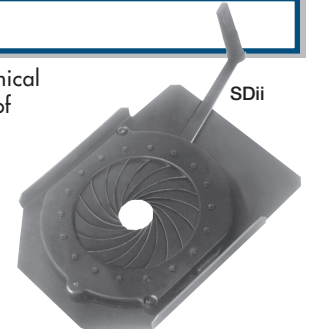
Supports for positioning patterns, or templates, in the optical center of ellipsoidal spotlights. A steel channel pattern holder is available for most ellipsoidals. An aluminum holder with three tabs or sandwich style is also available.



Catalog No.	Description & Applicable Fixture
MAPH	1 1/4" Diameter Image Area For Metal or Glass Gobos: MAC, ME
3.5Q-PH	2" Diameter Image Area: 3.5Q
360-PH	2 3/4" Diameter Image Area: 360Q, S6 Series, 4.5
1KL6-PH	2 3/4" Diameter Image Area: S6 Series

DROP-IN-IRIS

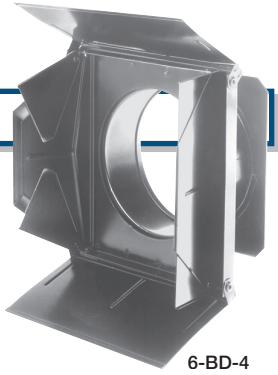
A plate that contains an iris, (a mechanical means of varying the diameter of a beam of light), which can easily be inserted or removed from an ellipsoidal spotlight.



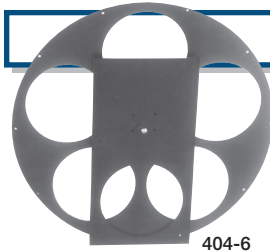
Catalog No.	Description & Applicable Fixture
SDii	Drop-in 3" Iris: S6 Series
S4Dii	Drop-in 3" Iris: ETC™ S4-Series

BARNDOORS

An apparatus with adjustable flaps, or "barn doors" that are used to control light spill in a controlled manner. This item is available for most Altman luminaires.



Catalog No.	Description & Applicable Fixture
MBD	4 Leaf: MF, MP
100-BD	2 Leaf: 100
6-BD-4	4 Leaf: 65Q, 165Q, 1KAF, PAR38, PAR56
8-BD-4	4 Leaf: 75Q, 175Q, PAR64, PAR64-AL,
QL-JR-BD4	4 Leaf: Q-LITE-JR
QL-BD4	4 Leaf: Q-LITE
F3-BD4	4 Leaf: 300L
F4-BD4	4 Leaf: 650L
F5-BD4	4 Leaf: 1000L, 575SE
F5-BD8	8 Leaf: 1000L, 575SE
F7-BD4	4 Leaf: 1000S, 2000L, 1200SE
F7-BD8	8 Leaf: 1000S, 2000L, 1200SE
F10-BD4	4 Leaf: 2000S, 5000L, 2500SE, UV-703
F10-BD8	8 Leaf: 2000S, 5000L, 2500SE, UV-703
F12-BD4	4 Leaf: 5000S, 4000SE
F12-BD8	8 Leaf: 5000S, 4000SE



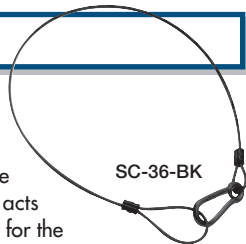
COLOR WHEELS

A wheel-like device to which 5 colors of gel can be attached. These wheels are rotated by a motor in such a manner that any one specific color gel can be placed in front of a luminaire with relative ease.

Catalog No.	Description & Applicable Fixture
404-4.5	Motorized: 4.5 Series, S6-20 thru -50, Par 46
404-6	Motorized: 65Q, 165Q 1KAF, 360Q, S6-12, S6-1535Z, S6-3055Z, PAR38, PAR56
404-8	Motorized: 75Q, 175Q, PAR64

SAFETY CABLE

A steel cable that has a clip on one end and a loop on the other. It is intended to be threaded around a piece of hanging equipment and around a support structure, such as a pipe batten, and then clipped to its loop. It then acts as a safety support should the primary support for the equipment fail.



Catalog No.	Description & Applicable Fixture
SC-36-BK	36" Safety Cable with Spring Clip: For All Fixtures

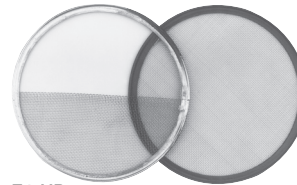
DONUTS

A metal plate used to increase the clarity of patterns in an ellipsoidal spotlight by reducing halation and sharpening the image. Available for most Altman ellipsoidal spotlights.



Catalog No.	Description & Applicable Fixture
3.5Q-DN	4 1/8" x 4 1/8" w/ 1 1/4" Hole: 3.5Q
4.5-DN	6 1/4" x 6 1/4" w/ 2 1/2" Hole: 4.5Q, S6-20 thru -50
6-DN	7 1/2" x 7 1/8" w/ 3" Hole: 360Q, S6-12, S6-1535, S6-3033Z,
8-DN	10" x 10" w/ 4" Hole

SCRIMS



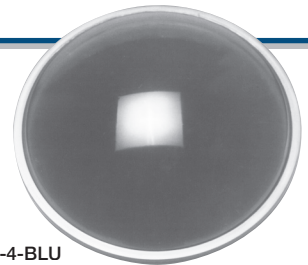
A round, framed metal screen, available in various densities, that acts as a dimmer when placed in front of a luminaire. They are also available so that only half of the frame is screened, allowing for only a portion of the light to be dimmed.

Catalog No.	Description & Applicable Fixture
F3-*	5" Diameter: 300L
F4-*	6 5/8" Diameter: 650L
F5-*	7 3/4" Diameter: 1000L, 575SE
F7-*	9" Diameter: 1000S, 2000L, 1200SE
F10-*	13" Diameter: 2000S, 5000L, 2500SE, UV-703
F12-*	15 1/2" Diameter: 5000S, 4000SE

* To order scrims, substitute the following:
FS = Full Single Density, **HS** = Half Single Density,
FD = Full Double Density, **HD** = Half Double Density, or
SC-SET = one each of the four density types.

ROUNDLS

Heat resistant colored glass roundels are used in border, cyc and footlights to provide permanent color washes. Roundels are also stocked as spread beam (50°) for smooth textured lighting effects.



Catalog No.	Description & Applicable Fixture
RNDL-4-*	4" Smooth Roundel: DF-400, 520
RNDL-5-*	5 5/8" Smooth Roundel: DF-558, 528, R40
RNDL-5-50-*	5 5/8" 50° Smooth Roundel: DF-558, 528, R40
RNDL-7-*	7 7/16" Smooth Roundel: 537, PAR56-B, PAR64-B
RNDL-7-50-*	7 7/16" 50° Smooth Roundel: 537, PAR56-B, PAR64-B
18-0110	8" Very Narrow Spot Lens: SP Series, Outdoor-Par Series
18-0111	8" Narrow Spot Spread Lens: SP Series, Outdoor-Par Series
18-0112	8" Medium Flood Spread Lens: SP Series, Outdoor-Par Series
18-0113	8" Wide Flood Spread Lens: SP Series, Outdoor-Par Series
18-0114	8" Very Wide Flood Spread Lens: SP Series, Outdoor-Par Series

* To order roundels, substitute the following:
AMB = amber, **BLU** = blue, **CLR** = clear, **GRN** = green, **RED** = red

Specifications subject to change without notice